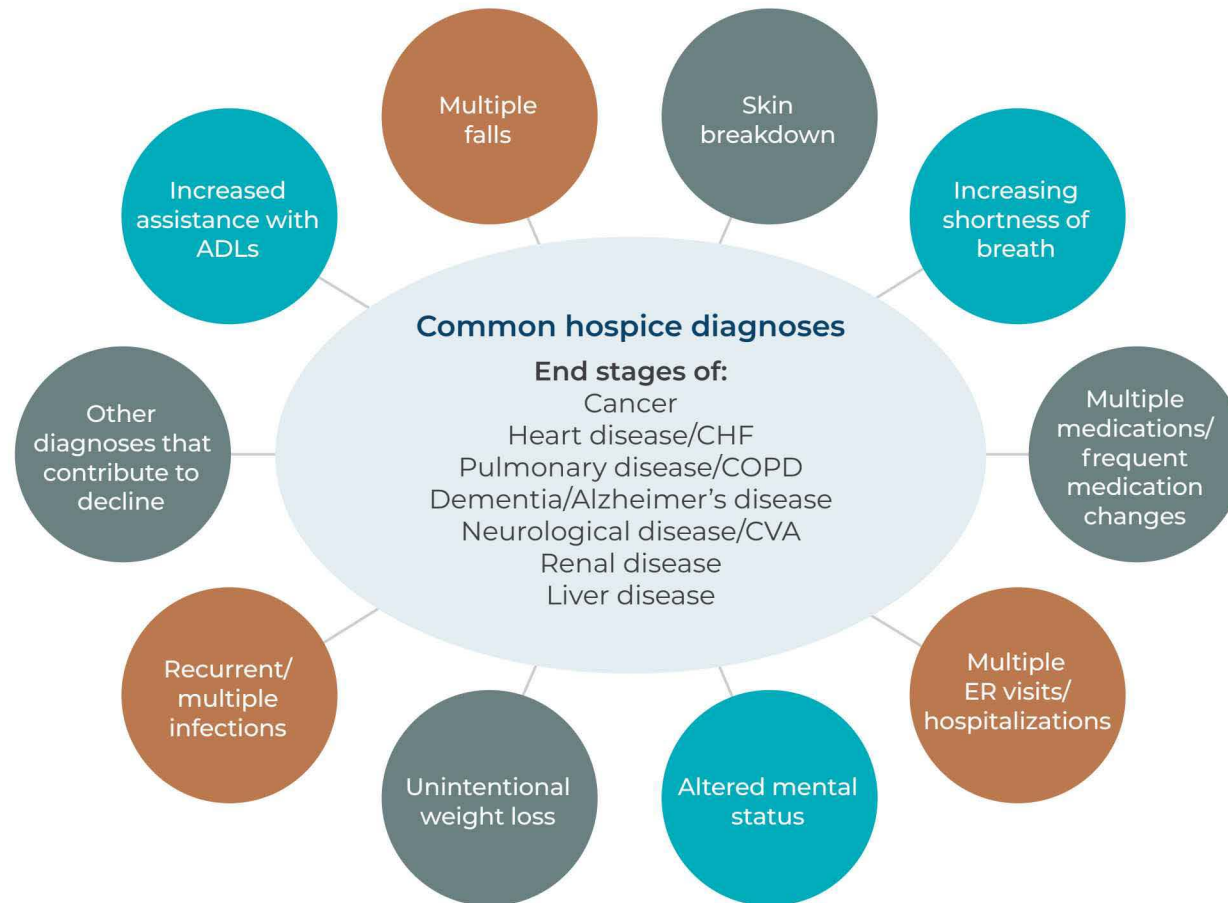


Possible indicators of hospice eligibility

Hospice care is intended for people with a life expectancy of six months or less if their terminal diagnosis follows its normal course. But it can be challenging to know when the right time is to consider hospice care.

When two or more of the following indicators are present, consider discussing hospice care with your patient and the patient's family.



For more information:

9484 Double R Bouled, Suite A., Reno NV 89521
(775) 825.5008 tel • (775) 853.4593 fax • NV TDD/TTY# (800) 326.6888

gentivahs.com

Gentiva is a family of home care service providers. © 2023 Gentiva 2200470



As your partner in patient care, we are available to lead or participate in conversations about hospice with patients and their families. We can also help ease the anxiety as a patient transitions from curative treatment to comfort care once they are determined to be eligible for hospice care.

In-home care and ongoing collaboration

When your patient is in our care, we will manage their pain and other symptoms, including emergencies. From answering questions about their plan of care to handling medication refills, we can immediately address the patient's needs. Our interdisciplinary team will keep you informed along the way and customize our ongoing communication to suit the preferences of your clinical team.



Hospice reimbursement assistance

Medicare reimburses attending physicians for care plan oversight when appropriate, as well as for patient visits when the appropriate modifier code (GV) is used. As hospice specialists, we can assist in helping you learn more.